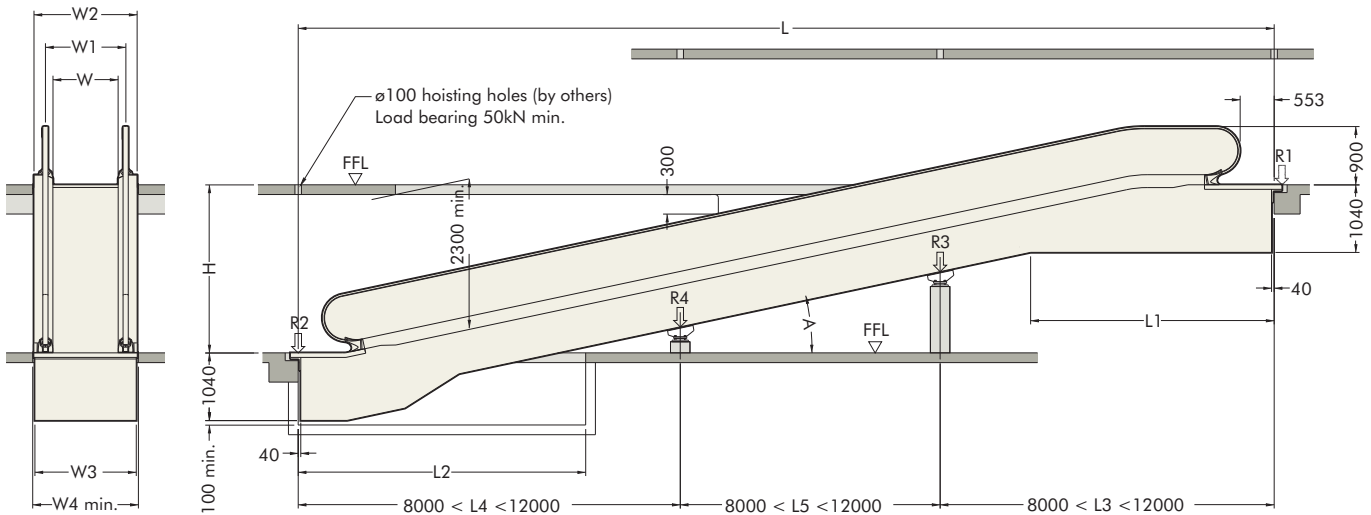


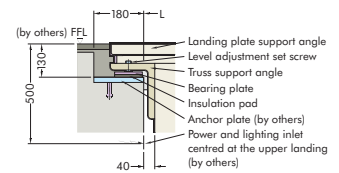
STA inclined moving walkway engineering data

This data sheet is for guidance only and must not be used for proper working drawings. Please contact Stannah for particular details before proceeding. Owing to our policy of continual improvement, we reserve the right to alter specifications and dimensions without prior notice.



Pallet Width (W)	1000	800
W1	1235	1035
W2	1592	1392
W3	1560	1360
W4	1640	1440

Note:
 1) All dimensions in mm
 2) For H < 6000, an intermediate support may be required – please consult Stannah



	ST-1040	ST-1044	ST-1140	ST-1144	ST-1240	ST-1244
Angle - A	10	10	11	11	12	12
Rise - H	1500-10340	1500-10340	1500-10580	1500-10580	1500-10780	1500-10780
L	5.06713H + 2951	5.6713H + 4436	5.1446H + 2977	5.1446H + 4488	4.7046H + 3003	4.7046 + 4541
L1	3934	3034	3790	3789	3672	3672
L2	5750	7260	5300	6830	4900	6480

