

Stannah Trolleylift: 250kg & 300kg engineering data

Trolleylift 250kg

Model	Capacity	Car (w x d x h)	Entrance (w x h)	Serving Height	Shaft (w x d)	Pit Depth	Headroom
250HP	250kg	1000 [†] x 950 [†] x 1175	795 [†] x 1090	Floor	1320 x 1320	175*	2800*
250CP	250kg	1000 [†] x 950 [†] x 1175	770 [†] x 1090	Floor	1320 x 1320	175*	2800*

Trolleylift 300kg

Model	Capacity	Car (w x d x h)	Entrance (w x h)	Serving Height	Shaft (w x d)	Pit Depth	Headroom
300HP	300kg	1000 [†] x 950 [†] x 1775	795 [†] x 1690	Floor	1320 x 1320	600*	3000
300CP	300kg	1000 [†] x 950 [†] x 1775	770 [†] x 1690	Floor	1320 x 1320	600*	3000

HP = single hinged steel landing door
CP = concertina shutter leaf landing gate

* Important Note about Pit:

The Trolleylift normally serves at floor level and would require a pit in the lowest floor. If you are unable to provide a pit the Trolleylift can be installed to serve at 175mm (600mm for 300kg models) above the lowest floor and a ramp will need to be provided by your builder.

Notes:

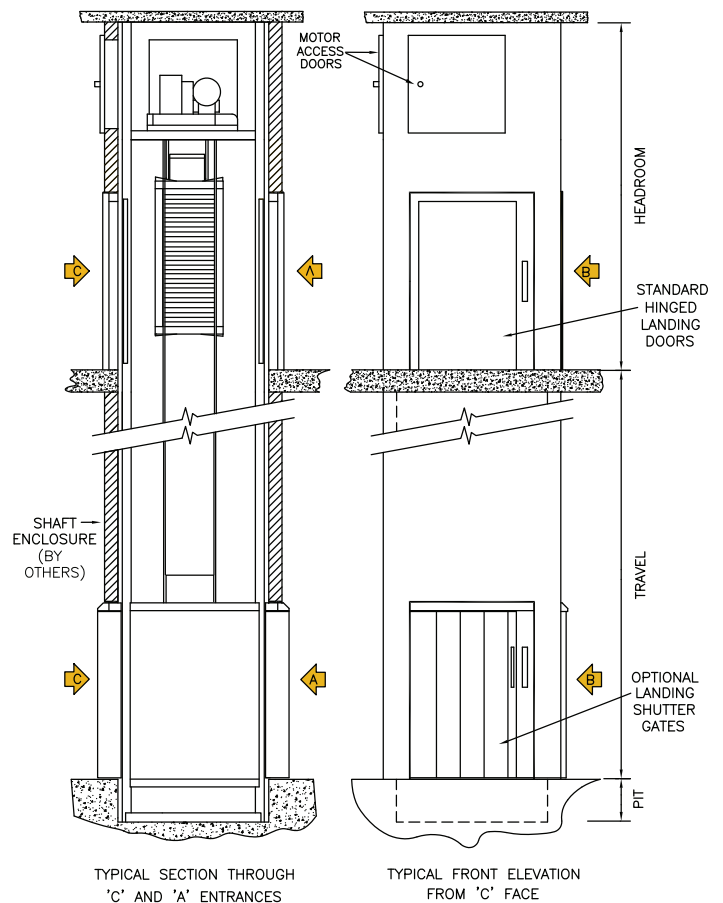
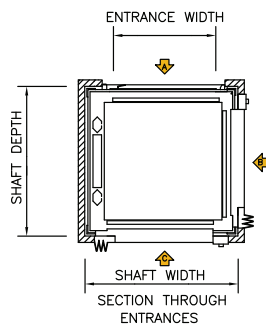
† If the car has a through/adjacent car entry arrangement, the car depth/width will be reduced by 50mm



Upper landing:
Single hinged steel door
Lower landing:
Optional concertina shutter leaf gate

Choice of entrance arrangements

Up to three way entry is possible, giving maximum access to the lift.



This data sheet is for guidance only and must not be used for proper working drawings. Please contact Stannah for particular details before proceeding. Owing to our policy of continual improvement, we reserve the right to alter specifications and dimensions without prior notice.

Stannah

Stannah Trolleylift: 250kg & 300kg engineering data

Safe maintenance access

The lift owner is responsible for ensuring a service engineer is able to access the motor compartment in a safe manner.

Access doors to the motor compartment are required on one or two faces of the lift shaft, depending on the configuration of the lift. The doors must be hinged and lockable.

Our builders work drawings contain more detailed information on this topic but please do not hesitate to contact us if you have any questions.



Specification

- Car:** Constructed in mild steel, finished in a tough grey baked enamel RAL 7038.
- Speed:** 0.17m/s.
- Entrances:** Landing entrances are protected by a single hinged steel door with grey baked enamel finish as standard, or optional concertina shutter leaf gate with galvanised finish. All doors are fitted to our structure and have safety locks to comply with safety regulations.
- Car entrance protection:** The lift car entrance is protected by a collapsible gate which protects goods from falling whilst the lift is in motion.
- Entry locations:** Entrances are available on any of three sides – please refer to the diagram overleaf for more information.
- Control:** Fully automatic push button control with call and send buttons at each entrance for ease of use.
- Indicators:** “Lift arrival”, “lift occupied” and “lift position” indicators are fitted at each entrance, together with an audible lift arrival buzzer.
- Travel:** Up to 6 stops over a total distance of 18m of travel.
- Mounting:** The Trolleylift is supplied with a structure-supported frame. We do not require a separate motor room or “load-bearing” lift shaft. A solid base and support at each floor is all that is needed from your building.
- Motor:** Mounted at the top of the lift structure, the smooth, quiet motor drives a high quality reduction gearbox fitted with a traction vee-sheave. An electro-magnetic disc brake is supplied, with emergency release mechanism. The reliable controller and counter-balance drive system ensure electrical consumption is minimal.
- Safety:** Complies with the Essential Safety Requirements (ESRs) of the Machinery Directive 2006/42/EC and EN 81-3 where applicable.

Additional options include: concertina shutter leaf gates, intercom system, load weighing, stainless steel car and/or hinged doors.