

**Goods moved to all floors.  
Stock constantly refreshed.  
Happy shoppers, busy tills.  
Find out what a Goodsmaster  
lift can do for you.**



**Stannah**



A woman with blonde hair in a ponytail, wearing a black long-sleeved shirt and blue jeans, is walking away from the camera down a supermarket aisle. She is holding a red shopping basket in her right hand. The shelves on the left are filled with various products, including large stacks of orange bags, and are blurred to suggest motion. The floor is light-colored wood or laminate. The background shows the interior of a large supermarket with high ceilings and other aisles.

**Goodsmaster:  
a simple, quick and  
economical solution to  
moving heavy stock and  
keeping shelves filled**

# What can a Goodsmaster lift do for you?

Stannah Goodsmasters make light work of moving heavy and bulky items. They protect you and your staff from the stresses and strains of manual handling. Installing a goods lift means you distribute goods quickly, efficiently and safely between floors. Our lifts require only a shallow pit and come in their own structure, so they slot in almost anywhere and are economical to run. The range includes the Goodsmaster Plus – specifically designed to allow up to two trained and competent attendants to accompany the load – giving you the choice and flexibility to move loads independently or with attendants, depending on your business needs.

## Goodsmaster Classic

**A versatile goods lift available in different shapes and sizes for large, bulky or heavy loads.**

Stannah Goodsmasters solve all your heavy lifting problems:

- Available in 500kg, 750kg, 1000kg and 1500kg capacities
- Flexible positioning in your building
- Energy efficient
- Fast delivery – can be installed and working in a few weeks (subject to builders work)
- Safe and easy to use
- Help you meet the requirements of the Manual Handling Regulations and Health and Safety at Work Act

## Goodsmaster Plus

**Allows up to two trained and competent attendants to accompany the load.**

Goodsmaster Plus retains all the features and capabilities of a standard Goodsmaster but with a number of modifications designed to allow up to two trained and competent attendants to accompany a load between floors. These features include:

- Cabin control panel – key switch operation with constant pressure control and emergency stop switch
- Cabin entrance protection – full height light ray
- Landing doors with vision panels

## For smaller loads

**Microlift** – Europe's best selling range of service lifts. 50kg-100kg capacity, ideal for the repeated movement of small loads.

**Trolleylift** – 250kg-300kg capacity, ideal for larger and bulkier goods in thousands of industrial and commercial businesses.

Contact Stannah for further information or go to [www.stannahlifts.co.uk](http://www.stannahlifts.co.uk)





**Goodsmaster:  
the perfect solution to  
moving heavy goods  
from floor to floor,  
safely and easily**

**The Stannah Goodsmaster range includes four capacity models from 500kg - 1500kg with a choice of standard car sizes.**

**How long does it take to manufacture a Goodsmaster?**

It usually takes six to nine weeks to make a Goodsmaster, depending upon the specification. To commence manufacture the specification must be confirmed, including the floor-to-floor dimensions.

**How long does it take to install a Goodsmaster?**

Just a few days for a two-floor lift. Our specially trained installation engineers will install your Goodsmaster as rapidly as possible, with minimal disruption to your premises.

A second visit by our engineers will follow once the builders work has been completed. This visit will include testing, commissioning and on-site training in the safe operation of the equipment.

**What about the builders work?**

This is quite straightforward, usually done in two stages. Stage one generally falls into two categories, either:

- a. Through-the-floor – usually all that is required is the lift shaft, an appropriate-sized opening in each floor, a pit for floor-level serving or a ramp and a three-phase power supply, or
- b. Adjacent to a mezzanine floor – all you need to provide is the space, a pit for floor-level serving or a ramp, suitable scaffolding and a three-phase power supply.

Once this basic work has been completed by your builder, we will install your Goodsmaster. After we have completed the installation, your builder will, at stage two, finish cladding around the lift shaft and decorate to your choice. Stannah then return to check the safety compliance of the builders work, after which we test, commission and CE mark the lift.

So, within a short time, you will have a fully-fitted Goodsmaster working for you, helping to make life easier.

**What is the next step?**

Call us to arrange a free survey of your premises. We'll be able to offer expert guidance on how to approach your lifting requirements and there's no obligation whatsoever.

## Factory

large roll containers, pallets

## Pub

beer crates, bottles, barrels

## Club

barrels, boxes

## Hotel

linens, wine, laundry

## Fast food

ingredients, heavy supplies

## Airport

suitcases, consumables, crates

## Supermarket

palletised goods, boxes

## Department store

white goods, furniture, stock

## Garden centre

plants, heavy pots, grow-bags

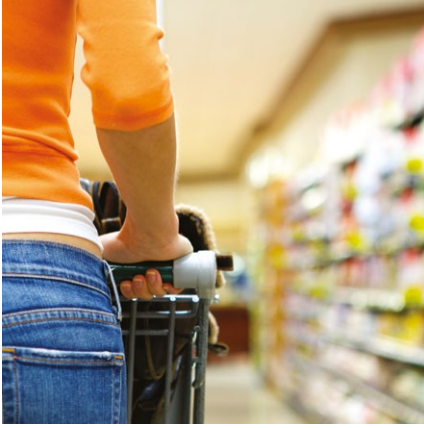
## Warehouse

heavy and bulky loads

### Manual Handling

All of Stannah's goods lifts will help you meet the requirements of the Manual Handling Regulations.

For a Short Guide to Manual Handling contact Stannah on 01264 351922 or go to [www.stannahlifts.co.uk](http://www.stannahlifts.co.uk)



**“The installation of a Stannah Goodsmaster has extended our capabilities, as we can now offer the Dunstanville Suite as a stunning venue for conferencing, banqueting, private dining, weddings and parties, where previously we could only accomodate meetings. Our customers are delighted.”**

Mark Pennells, Food and Beverage Manager  
at The Manor House Hotel

### **Meeting Standards:**

Goodsmasters comply with the Essential Safety Requirements of the Machinery Directive. They will also help you comply with the requirements of the Health and Safety at Work Act.



## Goodsmaster Classic Specification

<b>Car:</b>	Constructed from mild steel sheeting; finished in a tough grey baked enamel with heavy duty vinyl covered floor.
<b>Speed:</b>	0.20m/s nominal.
<b>Entrances:</b>	Single hinged steel door on 1045mm wide lift cars. Double hinged steel doors on 1305mm and 1445mm wide lift cars. Finished in grey baked enamel.
<b>Car entrance protection:</b>	A collapsible gate is fitted to the lift car entrance(s) as standard.
<b>Entry choice:</b>	Up to two entrances can be fitted on each floor – front and rear.
<b>Control:</b>	Fully automatic push button control with call and despatch facilities at each landing entrance.
<b>Indicators:</b>	"Lift arrival" and "lift occupied" indicators are fitted at each entrance for extra reassurance, together with an audible lift arrival buzzer.
<b>Floors:</b>	Up to five stops.
<b>Travel:</b>	Up to 15 metres of travel.
<b>Structure:</b>	The Goodsmaster is supplied in a structure-supported frame. A solid base and support at each floor is all that is needed from your building.
<b>Motor/winding unit:</b>	The 3kW motor is mounted on a bedplate fixed to the lift's structure. The motor drives a high quality reduction gearbox fitted with with 2:1 traction roping. Efficient and quiet in operation.
<b>Power supply:</b>	A 415V three phase supply is required with isolator adjacent to the lift motor.
<b>Safety:</b>	Complies with the Essential Safety Requirements (ESRs) of the Machinery Directive 2006/42/EC.
<b>Optional extras:</b>	<ul style="list-style-type: none"> <li>• Intercom system positioned at each landing entrance</li> <li>• Motor room enclosure</li> <li>• Sheet steel cladding finished in grey baked enamel</li> <li>• Variable height lift car</li> <li>• Concertina shutter leaf landing gate</li> </ul>



## Goodsmaster Plus

Since the change in the Machinery Directive in 2010 it is possible for goods lifts to carry up to a maximum of two trained operatives at any one time with the goods.

**The Stannah Goodsmaster Plus is supplied with all the additional safety features required for this purpose, including:**

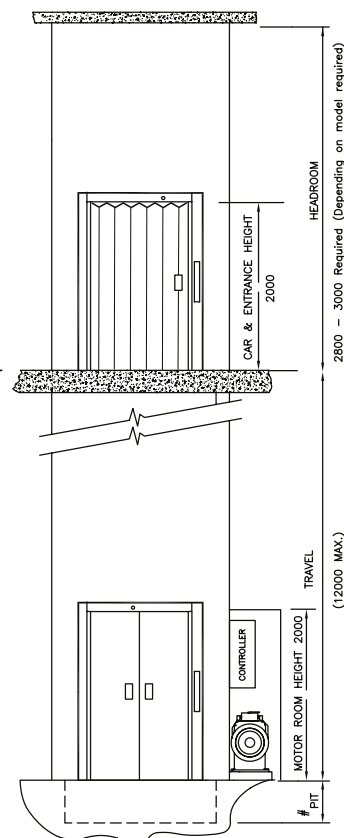
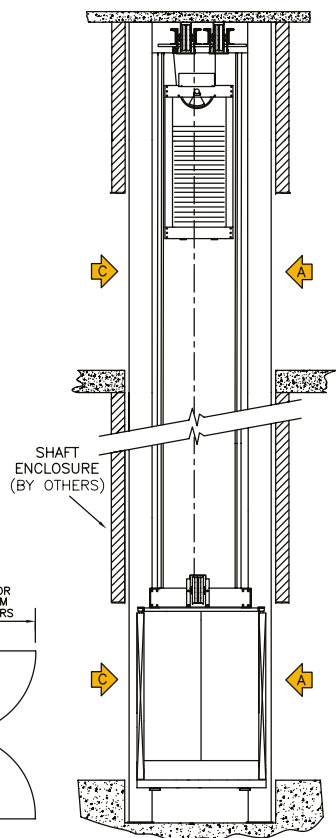
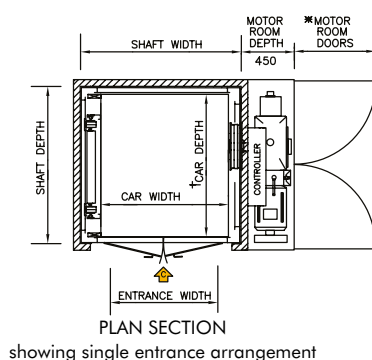
- Cabin control panel – key switch operation with constant pressure control and emergency stop switch
- Speed 0.15m/s nominal to meet the requirements of the Machinery Directive
- Cabin entrance protection – full height light ray
- Landing doors with vision panels
- Fluorescent cabin lighting with battery back-up
- Overspeed governor and bi-directional safety gear
- Load weighing device with audible signal
- Alarm device with battery back-up and an optional intercom system in the cabin
- Notified body approval

## Data sheets

Data sheets giving further technical information are available – please call 01264 351922 for a copy. Alternatively, you can download a PDF from our web site at [www.stannahlifts.co.uk](http://www.stannahlifts.co.uk)

### Choice of entrance arrangements

Up to two way entry on every floor is possible, giving you maximum access to the lift



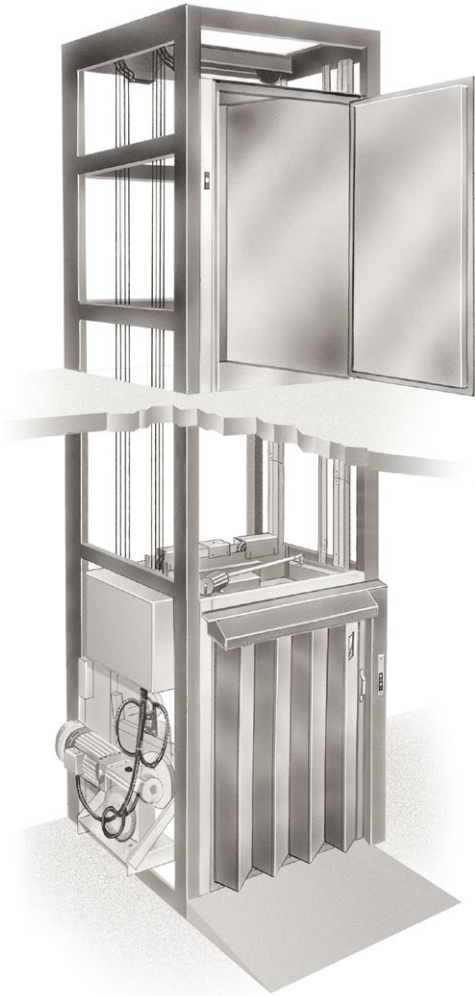
**“We simply couldn’t function without our Goodsmaster – it would be impossible to accept donations in the warehouse without it.”**

Marie-Anne Mansfield  
Community Director, Emmaus Hampshire





## Goodsmaster Dimensions



Above: upper landing – single hinged steel door; lower landing – optional concertina shutter leaf gate

Below: double steel hinged doors shown on the Goodsmaster Plus, for goods and attendant

### 500kg

Model	Capacity	Car			Entrance		Serving height	Shaft		Pit/ramp depth	Headroom	
		Width	Depth	Height	Width	Height		Width	Depth		Goods-master	Goods-master Plus
<b>500B</b>	500kg	1045	1235†	2000	1010	2000	Floor	1650	1500	150*	3000	3000
<b>500EU</b>	500kg	1305	1235†	2000	1305	2000	Floor	1950	1500	150*	3000	3000

### 750kg

Model	Capacity	Car			Entrance		Serving height	Shaft		Pit/ramp depth	Headroom	
		Width	Depth	Height	Width	Height		Width	Depth		Goods-master	Goods-master Plus
<b>750B</b>	750kg	1045	1235†	2000	1010	2000	Floor	1650	1500	150*	3000	3000
<b>750EU</b>	750kg	1305	1235†	2000	1305	2000	Floor	1950	1500	150*	3000	3000
<b>750S</b>	750kg	1045	1735†	2000	1010	2000	Floor	1650	2000	150*	3000	3000
<b>750XDS</b>	750kg	1460	2130†	2000	1410	2000	Floor	2050	2400	150*	3000	3000‡

### 1000kg

Model	Capacity	Car			Entrance		Serving height	Shaft		Pit/ramp depth	Headroom	
		Width	Depth	Height	Width	Height		Width	Depth		Goods-master	Goods-master Plus
<b>1000B</b>	1000kg	1045	1235†	2000	1010	2000	Floor	1650	1500	150*	3000	3000
<b>1000EU</b>	1000kg	1305	1235†	2000	1305	2000	Floor	1950	1500	150*	3000	3000
<b>1000S</b>	1000kg	1045	1735†	2000	1010	2000	Floor	1650	2000	150*	3000	3000
<b>1000D</b>	1000kg	1445	1435†	2000	1410	2000	Floor	2050	1700	150*	3000	3000‡
<b>1000DS</b>	1000kg	1445	1735†	2000	1410	2000	Floor	2050	2000	150*	3000	3000‡

### 1500kg

Model	Capacity	Car			Entrance		Serving height	Shaft		Pit/ramp depth	Headroom	
		Width	Depth	Height	Width	Height		Width	Depth		Goods-master	Goods-master Plus
<b>1500D</b>	1500kg	1445	1435†	2000	1410	2000	Floor	2050	1700	150*	3200	3200‡
<b>1500DS</b>	1500kg	1445	1735†	2000	1410	2000	Floor	2050	2000	150*	3200	3200‡

#### Important notes

\* **Motor housing:** It will be necessary to provide access for servicing via lockable double hinged doors for the full depth of the lift shaft. These are available from Stannah as an optional extra.

# **Pit or ramp:** The Goodsmaster normally serves at floor level and would require a pit in the lowest floor. If you are unable to provide a pit, the Goodsmaster can be installed to serve at 150mm above the lowest floor and a ramp will need to be provided by your builder.

† **Car depth:** With a through car entrance arrangement, the inside car depth reduces by 25mm nominal.

‡ **Headroom:** A reduction in headroom may be possible for D & DS models.

N.B. Consideration must be given to protect any accessible space beneath the bottom of the lift shaft. We would be pleased to provide further information if required.



Goodsmaster Plus



# Stannah a family of lift expertise

Stannah help people get on with their lives. Whether it's a lift at the station, a dumbwaiter at the coffee shop, a passenger lift at the office, a platform lift at the library, an escalator in the shopping centre, a moving walkway at the supermarket, a goods lift at the pub or a stairlift at home – we are there quietly helping life happen.

We design, manufacture, supply and install lifts to help life flow. We do this with the utmost care for our customers, our passengers and our staff. Our products are quality engineered, safe and reliable and supplied in the knowledge that we can maintain them 24/7 – efficiently via our service branches right across the UK.

By continually investing in new technologies, new products and our highly trained nationwide workforce we deliver value-for-money excellence. We are proud to be an independent family company whose specialist product and service divisions give our customers expert support right across our portfolio.

**240,000**

site visits per year

**40,000+**

new installs per year

**1867**

the year Joseph Stannah  
founded our company

**365**

days a year call-out



## Meet the family



**Stairlifts**



**Homelifts**



**Platform  
lifts**



**Passenger  
lifts**



**Service and  
goods lifts**



## More products in the Stannah range

### Passenger lifts

We first engineered passenger lifts in the 1860s. Today we offer our customers more choice and flexibility. Our MRL lifts are hydraulic or traction, wall-mounted or structure-supported, low or medium rise to carry from 6-33 people and we have a wealth of finishes to enhance any interior.

### Escalators and moving walkways

Stannah supplies, installs and maintains a range of escalators and moving walkways for applications across the UK. These products are maximising useable space in retail environments and moving people safely and efficiently in busy public areas.

### Platform lifts

Our economical platform lifts solve thousands of access problems every day. They are a simpler alternative to a traditional passenger lift for buildings that do not have constant people traffic. Designed to carry up to four passengers, platform lifts are supplied in their own structure so can go almost anywhere.

### Major lift refurbishment and bespoke lifts

Stannah undertakes special lift refurbishment and modernisation projects, often to maximise the use of new technology and save operating costs. We also supply and install bespoke lifts for unique places, working with our clients to their specifications.

### Lift service and repair

We provide local service, nationwide, from our network of branches across the UK. Our highly-trained engineers look after thousands of lifts 24/7, 365 days a year – our own products and most types of lifts from all other manufacturers.

And last but not least...

### Stairlifts

Stannah stairlifts are as stylish as they are practical. Since 1975 over 400,000 units have been sold worldwide, making Stannah global market leaders in stairlifts.



**Bespoke lifts**



**Escalators and moving walkways**



**Lift refurbishments, service and repair**

# Stannah



## **Stannah Microlifts**

Caxton Close, East Portway, Andover, Hampshire SP10 3QN

**Telephone: 01264 351922**

[www.stannahlifts.co.uk](http://www.stannahlifts.co.uk)

# Stannah