

# Stannah at: Haymarket Rail Station Vertical-access success in a major rail revamp



  
  
Lift to  
Platforms  
2 & 3

**TRE**  
IN CASE OF FIRE  
DO NOT  
HESITATE

Cashline™

Improved Access for All  
Increased efficiency  
Greater reliability

# Stannah



## The project

**As part of Network Rail's £25m revamp of Haymarket Station in Edinburgh, the Stannah Major Projects team has installed three 16-person, scenic, hydraulic passenger/goods lifts to help bring step-free Access for All (AfA) between the platform and footbridge to the travelling public, whatever their level of mobility.**

The refurbishment forms part of the Edinburgh to Glasgow Improvement Programme, a £650m comprehensive package of improvements to Scotland's railway infrastructure being delivered by Network Rail.

## The station

Haymarket Station is a Category A listed station located near the city centre. It is the second largest railway station in Edinburgh and the fifth busiest in Scotland. With a footfall of over 2 million, it is one of the most congested stations in the Scottish rail network.

**25**

£million regeneration of a major rail transport system

**24-7**

movement of people and goods

**2**

million passenger footfall – and rising

**3**

Stannah passenger/goods lifts

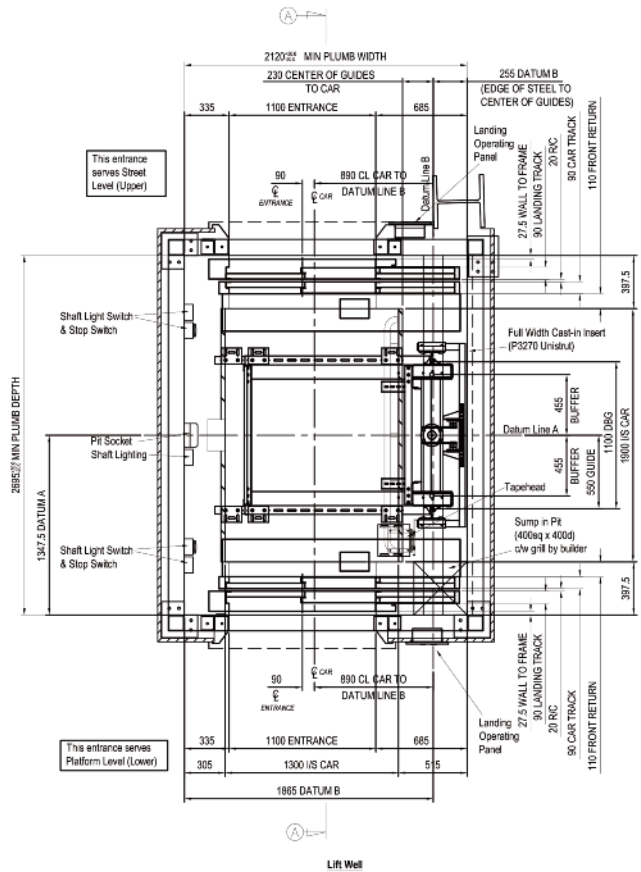
### The constraints

Any site has constraints that may require lifts to be designed and manufactured to suit these idiosyncrasies. In this case, at 2100mmW x 2675mmD, the lift shafts were narrower than usual, so the lifts had to be tailored to non-standard dimensions, yet still achieve the 16-person capacity required by Network Rail. They incorporated a rucksack arrangement with the sling and hydraulics, rather than the usual twin rams, which as well as allowing for a larger lift car, also enables more light travel through the lift shaft and onto the atrium.

### Three passenger/goods lifts – one specification

Apart from different travel distances, the lift trio enjoy an identical specification:

<b>Drive :</b>	Hydraulic, VVF with energy accumulator, direct acting with single Ram to the side
<b>Load/capacity:</b>	16 person/1200kg
<b>Speed:</b>	0.63m/s
<b>Travel:</b>	5742mm/5765mm/5645mm
<b>Stops:</b>	2
<b>Entrances:</b>	Through entry
<b>Floor designation:</b>	Platform and footbridge
<b>Shaft size:</b>	2100mm W x 2675mm D, minimal internal plumb
<b>Headroom:</b>	4000mm underside of lifting beam minimum
<b>Pit depth:</b>	1400mm minimum





### Lift car:

Car size, internal:	1300mm W x 1900mm D x 2300mm H
Clear door dimensions:	1100mm W x 2100mm H
Interior:	Fully glazed
Front returns:	Raltex pattern 6WL black
Handrail:	45mm diameter, powder-coated new gardenia
Bump rail:	Black rubber
Door finishes:	Glazed panels with 75mm frame
Door tracks:	Bronze
Lighting:	Vandal-resistant, with back-up
Flooring:	Altro Atlas
Door operator:	AC VVF
Safety edge:	Full height infra-red
Car station:	Powder-coated new gardenia
Push type:	Square braille, tactile and half illumination

### Landing:

Clear opening:	1100mm W x 2100mm H
Door type:	Side opening
Door operator:	Automatic
Door finish:	Fully glazed, with stainless steel trims and anti-finger trapping
Architraves: (standard depth)	Raltex pattern 6WL black



**“The Haymarket Rail Station project went to plan, completing on time and budget. Access for everyone, including wheelchair-users, has been substantially improved between two busy areas. This enables the station to function more efficiently, an important factor in Network Rail’s part in the creation of a multi-modal transport hub fit for the 21st century.”**

Jerry Sutton, Project Manager, Stannah Major Projects



### Clients

Network Rail  
City of Edinburgh Council

### Main Contractor

Morgan Sindall

### Architect

IDP Architects LLP

**“This is just one of several landmark installations carried out in Scotland by the Major Projects team, following on from Waverley Station – also in Edinburgh, and Dunblane Station, which was completed to tie in with the 2014 Ryder Cup.”**

John Ottaway, Project Support Engineer,  
Stannah Major Projects



## The Stannah Major Projects Team

This dedicated team exists to provide all aspects of a project at one single point of contact. Individuals within the team are skilled in project planning and management, estimating, technical operations, logistics, product design and engineering, field managers, installation engineers, health and safety and quality control that together drive the project.

## The full service

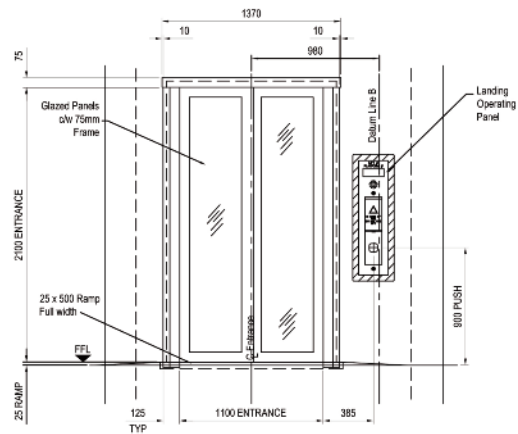
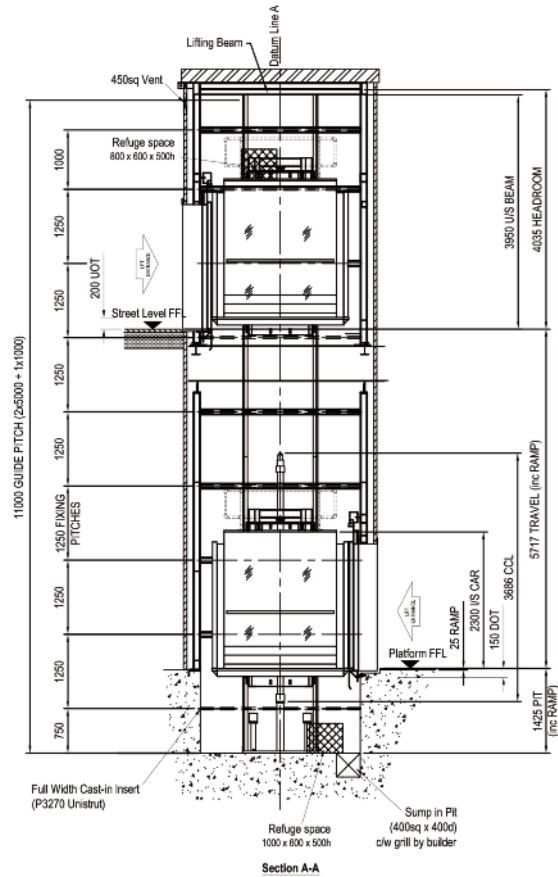
All the Stannah lifting equipment at Haymarket Station is supplied with guarantees and will be maintained by the Scotland branch of Stannah Lift Services Limited as part of the nationwide service and maintenance contract with Network Rail.

## The Stannah promise

Stannah is committed to delivering:

- The best quality products
- Superior service
- Good value for money
- And, last but not least, reliability

**All backed by a 150-year lift manufacturing pedigree.**



All Stannah lift products meet required standards, including: The Equality Act 2010, EN81-70, EN81-3, BSEN115, Health & Safety at Work Act, CE Mark and Certificate of Conformity.

To find out more about Stannah's comprehensive ranges of Passenger Lifts, Platform Lifts, Escalators & Moving Walkways and Goods & Service Lifts, go to [www.stannahlifts.co.uk](http://www.stannahlifts.co.uk)

### Stannah Lift Services Ltd

Watt Close, East Portway, Andover, Hampshire SP10 3SD

Telephone: 01264 364311

Email: [liftservices@stannah.co.uk](mailto:liftservices@stannah.co.uk)

[www.stannahlifts.co.uk](http://www.stannahlifts.co.uk)



# Stannah