

Stannah at Nottingham Rail Hub: Creating vertical access in a major rail revamp

Improved reliability
Increased passenger capacity and safety
Optimised rail experience for all users

The image shows the interior of the Nottingham Rail Hub, a large, ornate railway station. The architecture features a high, vaulted ceiling with a series of skylights and decorative elements. The walls are made of light-colored stone or brick, with arched windows and doorways. In the foreground, there are blue barriers with white text and logos, including the Stannah logo. A sign above a set of stairs reads "COLLECT HERE". A digital display board is visible on the right wall, and a clock is mounted on the wall above it. People are seen walking through the station, and a sign in the foreground says "Buy tickets for today here" and "GET ON BOARD EAST MIDLANDS TRAINS".

Stannah



The project

An £18.5 scheme to regenerate Nottingham Station in the East Midlands into a world class transport interchange – an integral part of a wider, 4-year, £150m regional transportation development.

The station upgrade is a key component in the overall project that also includes platform building, track re-laying, signal replacement, junction remodelling, changing track layouts, replacing level crossings with footbridges, renewing equipment, and moving control of signalling to a state-of-the-art centre in Derby.

The Hub will support Nottingham City Council’s aspiration to create a transport facility that meets the needs of both passengers and operators. It aims to support Nottingham’s physical transformation and economic growth, contributing to its economic competitiveness, attractiveness and sustainability.

150

£million regeneration of a major rail transport system

24-7

movement of people and goods

7

million passenger footfall – and rising

5

Stannah lifts

The station

This redevelopment includes the restoration of the Edwardian, Grade II listed building at the front of the station. It is expected to be complete in 2014, in time for the opening of Nottingham's extended tram network later in the year.

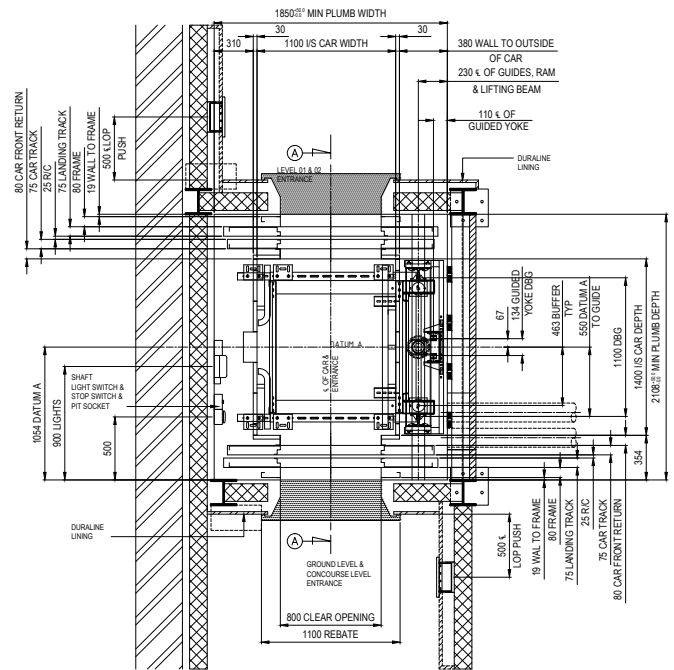
Nottingham Hub will provide the ability for passengers to switch between train, tram, bus, taxi, and car, all within the immediate vicinity of the station.

The complete works

- An upgraded concourse and a new ticket office;
- Existing porch (home to the taxi rank) converted for passenger use with new glazing, flooring and cafés;
- A new southern concourse to serve the new tram stop;
- The station exterior and the buildings along the platforms cleaned and refurbished, with glass panels added to the canopies to improve lighting.

The 5 Stannah lifts

A refurbishment mix of passenger and passenger/goods lifts that has improved vertical access and movement of people and goods around the station. The lifts were designed and installed by Stannah's Major Projects team in conjunction with Network Rail, main contractor, Taylor Woodrow, architect Pascall+Watson, and Nottingham City Council.





Serving Platform 7 and the main concourse:

1 x passenger lift

Levels: 2 stops
Drive: Hydraulic
Capacity: 40 person/3000kg
Configuration: Single entry
Speed: 0.63 m/s
Control: Fully collective
Car size: 1900W x 2850D x 2300H
Entrance size: 1400W x 2100H
Machine room: Separate
NB. Stannah Major Projects was responsible for all works, including the removal of the existing passenger lift.

Serving the newly refurbished British Transport Police Block:

1 x passenger lift

Levels: 4 stops
Drive: Hydraulic
Capacity: 630kg / 8-person
Configuration: Through-car
Speed: 0.63 m/s
Control: Fully collective
Car size: 1100W x 1400D x 2300H
Entrance size: 800W x 2100H
Machine room: Separate



"The Nottingham Rail Hub project went to plan, completing on time and budget, with three of the lifts installed in a 7-week programme, and two installed in 5-week programme, ranged over 9 months. Access about the station has been dramatically improved and will assist in the swift, safe, reliable movement of people and goods, an important factor in Network Rail's creation of a multi-modal transport hub fit for the 21st century."

Mark Jarratt, Project Manager, Stannah Major Projects

Serving the new concourse, new street-level taxi rank, and the Nottingham Express Transit tram stop:

1 x passenger lift

Levels: 2 stops
Drive: Hydraulic
Capacity: 1200kg/16 person
Configuration: Through-car
Shaft: Half-glazed
Speed: 0.63 m/s
Control: Fully collective
Car size: 1600W x 1600D x 2300H
Entrance size: 1100W x 2100H
Machine room: Separate

“Network Rail is gradually overhauling the whole of the UK’s rail network system, and Nottingham Rail Hub is just the latest in a long line of stations receiving similar treatment. Many feature Stannah passenger lifts, goods lifts and platform lifts in their refurbishments – proof we have great lifts backed by great service, before, during and after installation.”

Mark Jarratt, Project Manager, Stannah Major Projects





Lift finishes

All the lifts are finished to the Network Rail vandal-resistant/Equality Act 2010 specification:

Lift car:

Side walls: 16 gauge 316 grade 'Linen' pattern stainless steel
 Entrance returns: 16 gauge 316 grade 'Raltex' 6WL pattern BLUE stainless steel
 Panel interface: BLUE Darvic strip
 Skirting: 14 gauge 316 grade 'Satin' stainless steel
 Ceiling: 16 gauge white powder coated
 Car station: 3mm 316 grade 'Satin' stainless steel – New Gardenia BS10B15
 Car doors: 16 gauge 316 grade 'Linen' pattern stainless steel
 Flooring: Altro Atlas 40 – Anvil
 Handrails: Stainless steel – New Gardenia BS10B15

Landing entrances:

Doors: 16 gauge 316 grade 'Linen' pattern stainless steel
 Surrounds: 16 gauge 316 grade 'Raltex' 6WL pattern BLUE stainless steel
 Landing sills: Bronze
 Landing operation panel: BLUE pattress surround

Serving the new retail area:

2 x goods/passenger lifts

Levels: 2 stops
 Drive: Hydraulic
 Capacity: 2000kg/26 person
 Configuration: Through-car
 Speed: 0.63 m/s
 Control: Fully collective
 Car size: 1800W x 2550D x 2300H and 1800W x 2350D x 2300H
 Entrance size: 1400W x 2100H
 Machine room: Separate

NB. The lifts are located back-of-house to move stock from the delivery facility to the shops and food outlets.

The Stannah Major Projects team

This dedicated team exists to provide all aspects of a project at one single point of contact. Individuals within the team are skilled in project planning and management, estimating, technical operations, logistics, product design and engineering, field managers, installation engineers, health and safety and quality control that together drive the project.

The full service

All the Stannah lifting equipment at the new Nottingham Rail Hub is supplied with guarantees and will be maintained by the East Midlands branch of Stannah Lift Services, as part of the nationwide service and maintenance contract with Network Rail.

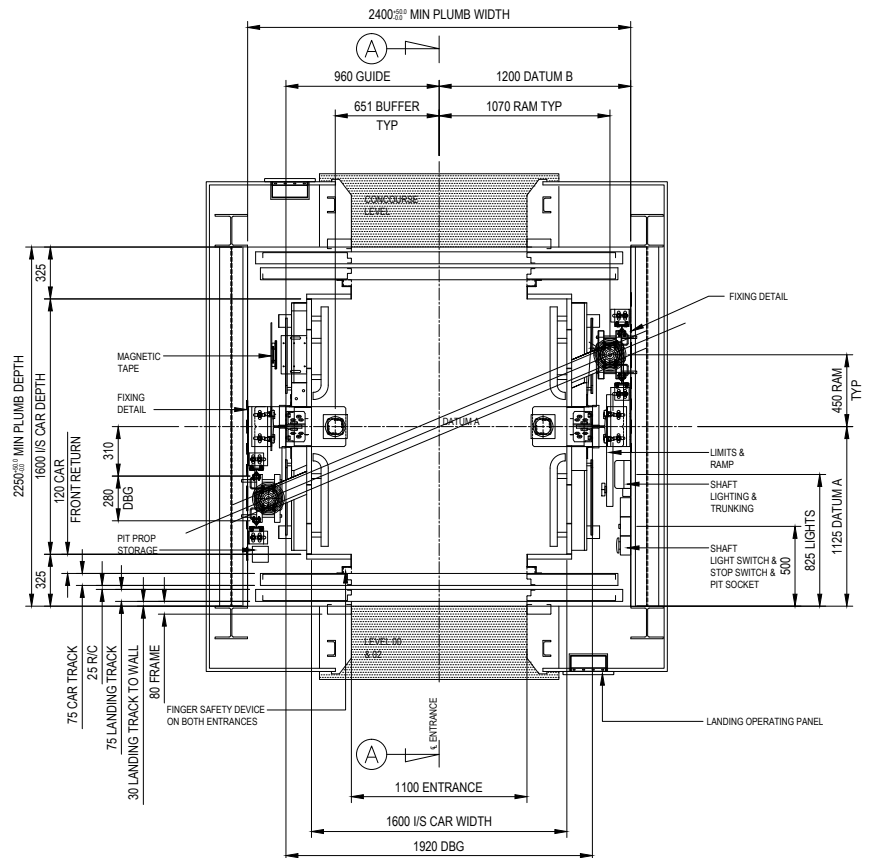
The Stannah promise

Stannah is committed to delivering:

- The best quality products
- Superior service
- Good value for money
- And, last but not least, reliability

All backed by a 150-year lift manufacturing pedigree.

All Stannah lift products meet required standards, including: The Equality Act 2010, EN81-70, EN81-3, BSEN115, Health & Safety at Work Act, CE Mark and Certificate of Conformity.



Clients

Network Rail
Nottingham City Council

Main Contractor

Taylor Woodrow

Architect

Pascall + Watson

To find out more about Stannah's comprehensive ranges of Passenger Lifts, Platform Lifts, Escalators & Moving Walkways and Goods & Service Lifts, go to www.stannahlifts.co.uk



Stannah Lift Services Ltd

Watt Close, East Portway, Andover, Hampshire SP10 3SD

Telephone: 01264 364311

Email: liftservices@stannah.co.uk

www.stannahlifts.co.uk

Stannah