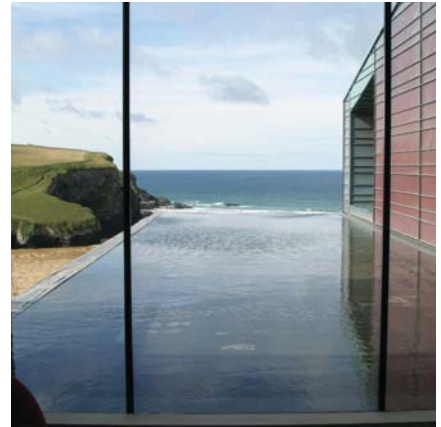




**Easy, quiet access to all facilities.  
Happy hotel guests. Happy staff.  
Efficient service and spectacular  
views in an oasis of calm.  
Find out what our  
passenger lifts and service lifts  
did for Scarlet Hotel, Cornwall.**



**“The Scarlet Hotel is a haven of peace and sustainable opulence. Every care has been taken to enhance customer and staff comfort, including the provision of a luxury passenger lift and a Trolleylift. These reliable Stannah lift products will discreetly improve our service and help us maintain the safe movement of people and goods.”**

Nikki Broom  
Scarlet Hotel General Manager



**Since opening on the 1st of September 2009, the UK's first-ever, purpose-built, luxury, eco-friendly 'Scarlet Hotel' in Mawgan Porth, Cornwall has been running smoothly and efficiently with the uplifting assistance of two Stannah lift products.**

### **Green-tinted glasses – how a family vision came true**

The £9.5m, family-owned Scarlet Hotel is the eco-child of the three Whittington sisters whose veins must run with green blood as they also own the nearby 1960s-built Bedruthan Steps hotel, where solar panels and a grass roof were installed at a time when such actions were considered bizarre.

Fitting neatly into a comprehensive sustainable-environment agenda including a recyclable external copper wall, 150sq.m. of solar panelling, and heating via a biomass boiler, the two Stannah lifts contribute to the embracing mantra of 'luxury and conscience' whilst servicing the six staggered terraces that comprise this 37-bedroom, wholly-adult sanctuary with a strict 'no children – no pets' policy.

The project was handled by the design partnership of Totnes-based Chartered Architects, Harrison Sutton Partnership, and German timber-frame builder, Bauwerk. The lifts were specified as part of this collaboration, overcoming German competition for reasons of cost-effective eco-suitability and local after-sales service.

This positive partnership was supported by Stannah Technical Representative, Tony Stockman, whose excellent working relationship with both parties helped ease the lift specification process within a constantly-evolving and scrupulous ecological policy.

# 37

bedrooms

# 6

floors

# 2

Stannah lifts

# 0

children or pets





**“The Stannah Maxilift and Trolleylift fulfilled the owners’ luxury-plus-conscience ethos backed by cost-effective performance and local after-sales service. Also, Stannah’s Technical Representative, Tony Stockman, was extremely helpful at all stages in determining the right lift for the job, its operational features and finishing touches.”**

Jon Capel  
Harrison Sutton Partnership Architect







**“By establishing an excellent working relationship with architect and contractor, Stannah helped set the tone for this challenging project. Our professional and resourceful teamwork contributed to realising a stringent ecological brief which changed as the hotel evolved.”**

Tony Stockman  
Stannah Technical Sales Representative

**Access and assistance – luxury with less legwork**

Built into the hillside with a sympathetic, curvilinear profile, the hotel relies on its two Stannah lifts to help optimise accessibility and streamline service so that everyone can fully appreciate the outstanding features and facilities which include:

- picture windows at all levels – reveal panoramic views of the bay
- unusual art and sculpture – instil individuality in key public areas
- colourful furnishings, warming wood, cool slate floors – comfort naturally
- a sumptuous restaurant – delights with the finest, locally-sourced organic food
- an authentic Ayurvedic spa – pampers the most indulgent of luxury-lovers

## Smooth, silent service – how the lifts shaped up

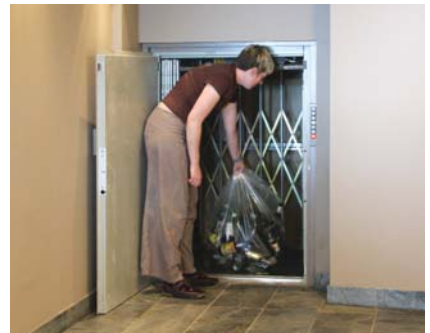
Throughout this multi-tiered venue, guests, staff and visitors now appreciate the leg-saving services of an 8-person Maxilift MXL hydraulic passenger lift, supported by a 250kg Trolleylift for the heavy-duty haulage of baggage, boxes, crates and cartons.

As the lifts were catered for from the drawing board, their installation complemented the hotel's green dream, followed by a successful handover and problem-free performance record.

Finished in brushed stainless steel with complementary blue laminate panels and a solid wood floor, the MXL passenger lift is a motor room-less model that houses the hydraulic drive system within the lift shaft and the controller in any of the landing architraves. This flexibility saved on space and cost, making it the ideal choice for any eco-conscious enterprise. The MXL is the deluxe model in the Maxilift range of passenger lifts and, as with all Stannah passenger lifts, helped the Whittington sisters meet with DDA requirements for access for people of all mobility levels.

The Trolleylift is a rugged service lift that loads from floor level. The landing entrances are protected by a single, hinged, steel door with grey baked-enamel finish, and a concertina shutter-leaf gate with a galvanised finish. All doors have safety locks to comply with safety regulations. Supplied in a structure-supported frame, the lift does not require a separate motor room or load-bearing lift shaft. It was easily and swiftly installed with the minimum of builders work and helps the owners meet the requirements of the Manual Handling Regulations. This through-car model is ideal for the reliable, efficient movement of larger loads such as luggage, laundry and supplies in this deceptively busy environment.

All Stannah lift products meet required standards, including: DDA, EN81-70, EN81-3, BSEN115, Health & Safety at Work Act, CE Mark and Certificate of Conformity.



To find out more about Stannah's comprehensive ranges of Passenger Lifts, Escalators & Moving Walkways and Goods Lifts, go to [www.stannahlifts.co.uk](http://www.stannahlifts.co.uk)

### Stannah Lifts Ltd

Anton Mill, Andover, Hampshire SP10 2NX

Telephone: 01264 339090

Email: [liftsales@stannah.co.uk](mailto:liftsales@stannah.co.uk)

[www.stannahlifts.co.uk](http://www.stannahlifts.co.uk)

  
An independent family business since 1867

# Stannah